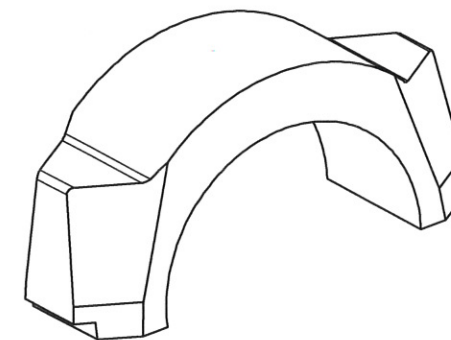
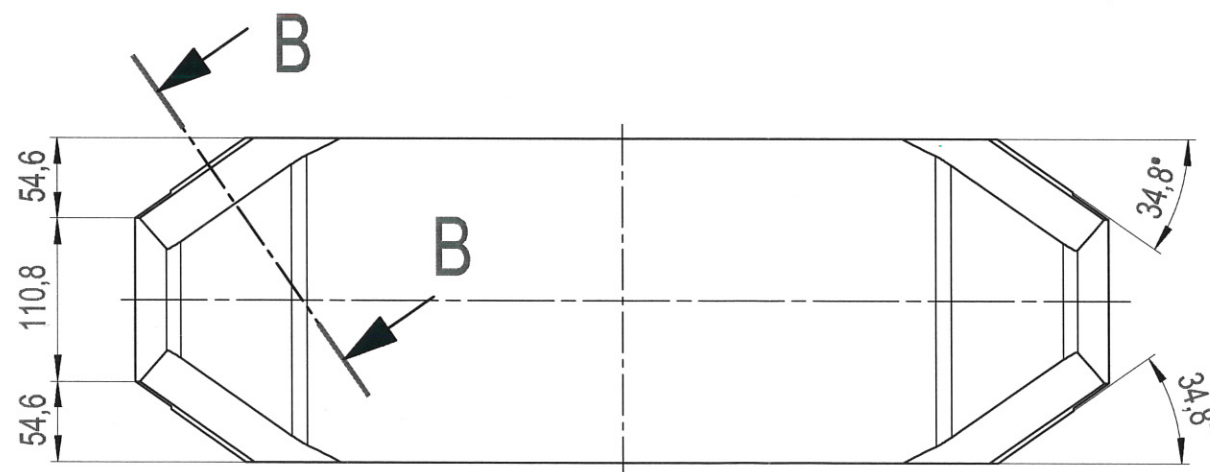
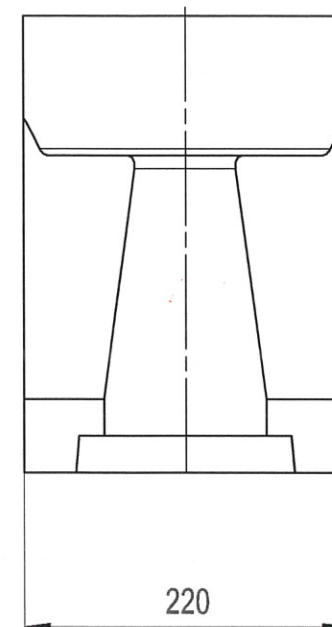
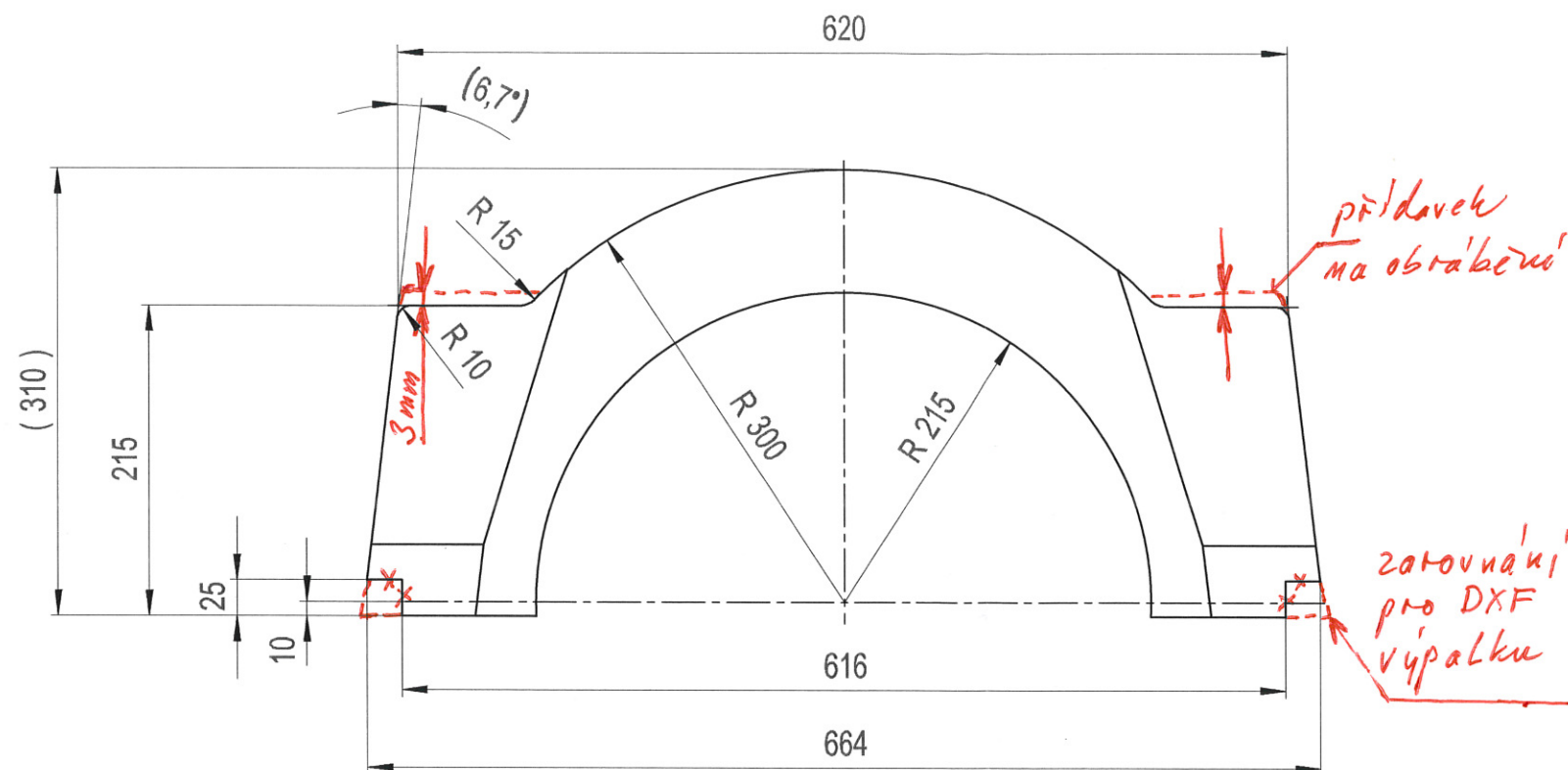
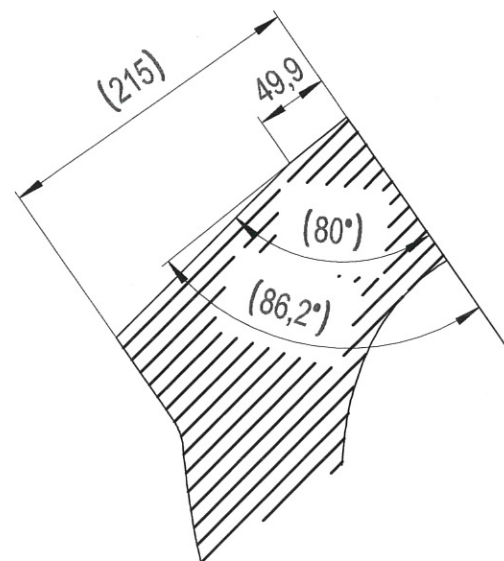


- Weitergabe sowie Vervielfältigung dieses Dokuments, Verwertung und Mitteilung seines Inhalts sind verboten, soweit nicht ausdrücklich gestattet. Zuwiderhandlungen verpflichten zu Schadenersatz. Alle Rechte für den Fall der Patent-, Gebrauchsmuster- oder Geschmacksmusterertragung vorbehalten.  
- The reproduction, distribution and utilization of this document as well as the communication of its contents to others without express authorization is prohibited. Offenders will be held liable for the payment of damages. All rights reserved in the event of a patent, utility model or design.





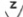


B-B



Abnahmeprüfzeugniss nach EN 10204-3.1 ist vorzulegen.

B251/ = Beschichtung "Lack" KWN 2186915

Alternative Part No <b>2656780</b>		Rev-No <b>00</b>		DE Lagerschale oben Rohteil STR110 UNL				
				EN Bearing housing raw part STR110 UNL				
REFER TO PROTECTION NOTICE ISO 16016		MATERIAL  ECN-NO. <b>59873</b> MAT-SPEC.			TYPE      DOCUMENT-NO.      VERS. STATUS			
					<b>UGD 4289599      03      SF</b>			
HSTG			DRAWING BY	APPROVED BY	LAST MODIFIED BY	WEIGHT <b>131 KG</b>	SCALE <b>1:5</b>	FORMAT <b>A3</b>
ISO 8015	ISO 14405	DATE	<b>18.10.2011</b>	<b>05.06.2018</b>		FIRST USE		SHEET OF
ISO 2768	m/K	NAME	RUDOLPHL	KAZMAIERB		<b>K006</b>		<b>1 / 1</b>
ISO 13920	BF	DESCRIPTION <b>Lagerschale oben Rohteil STR110 LAK</b> <b>BEARING HOUSING</b>						
ISO 8062	CT10							
ISO 9013	231							
ISO 1101	EN ISO 1302							
 beliebig = at liberty		 = $\sqrt{R_z} = 25$		PART NO.			REV.NO.	
 = $\sqrt{R_z} = 100$		 = $\sqrt{R_z} = 6,3$		<b>2241888</b>			<b>02</b>	
<b>KWN 2188113</b>								